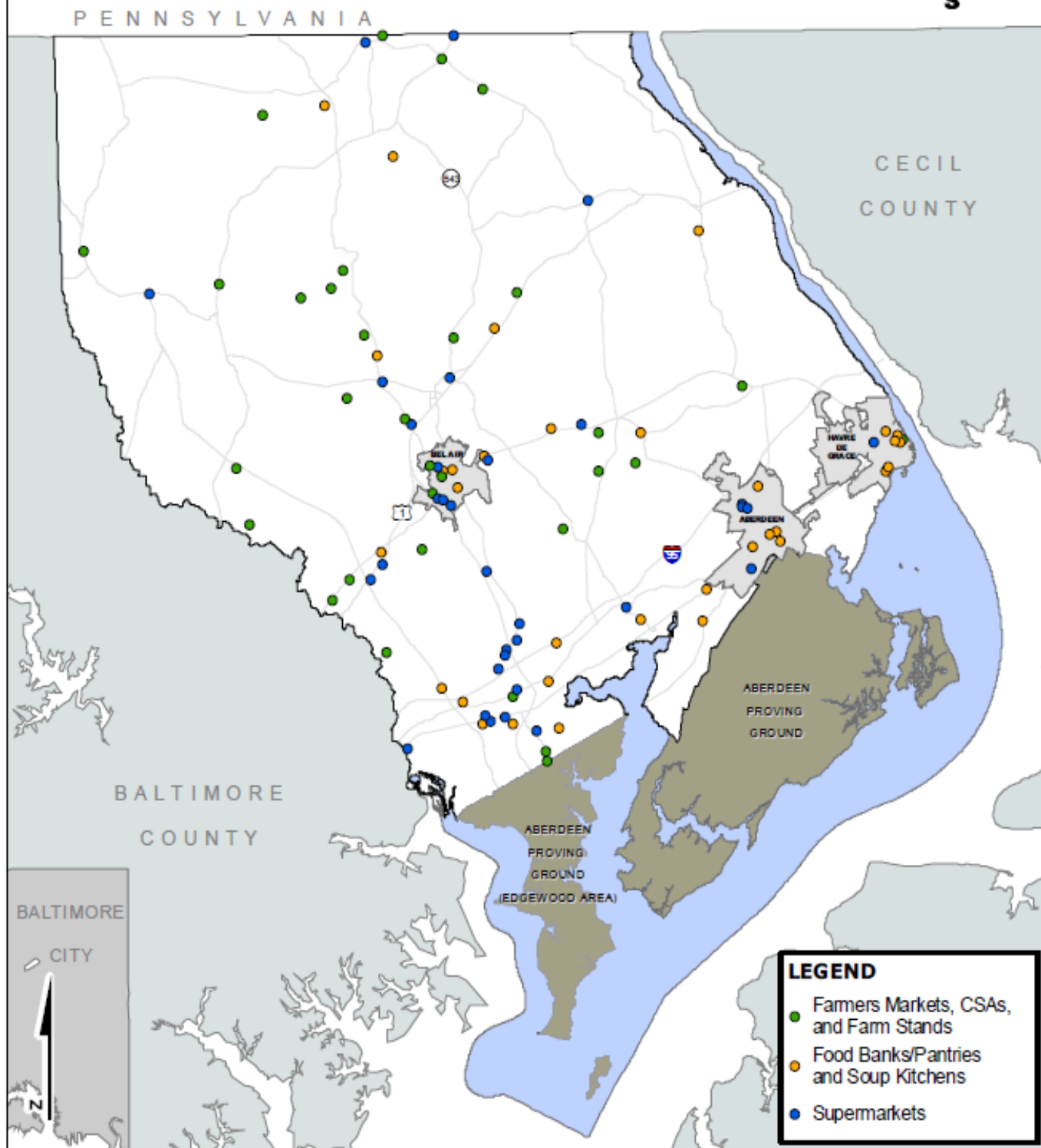


ACCESS TO FOOD IN HARFORD COUNTY



0 1 2
Miles

ACCESS TO FOOD IN HARFORD COUNTY



PENNSYLVANIA

CECIL
COUNTY

BALTIMORE
COUNTY

BALTIMORE
CITY

LEGEND

- Farmers Markets, CSAs, and Farm Stands
- Food Banks/Pantries and Soup Kitchens
- Supermarkets

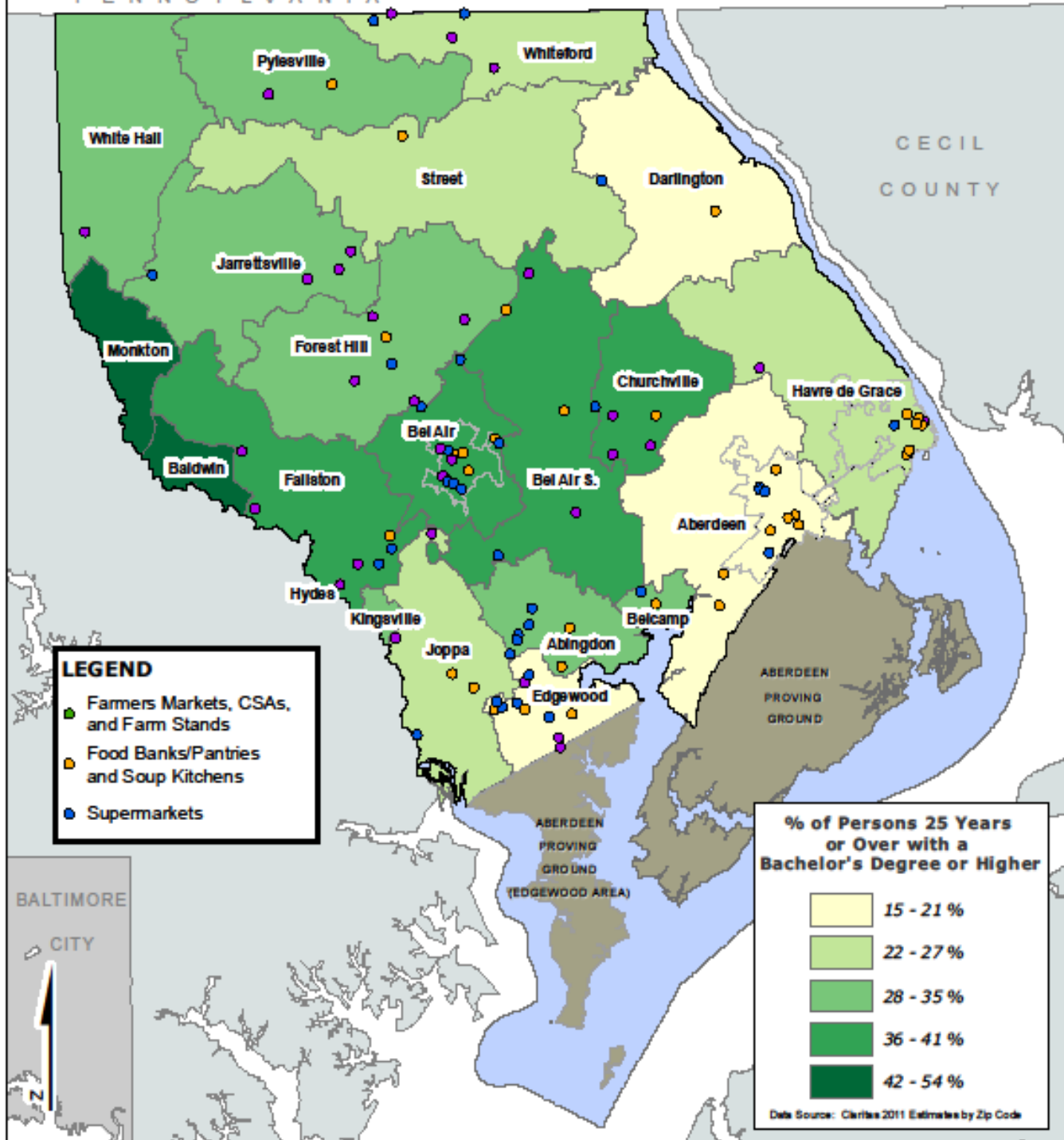
0 1 2
Miles

ACCESS TO FOOD IN HARFORD COUNTY

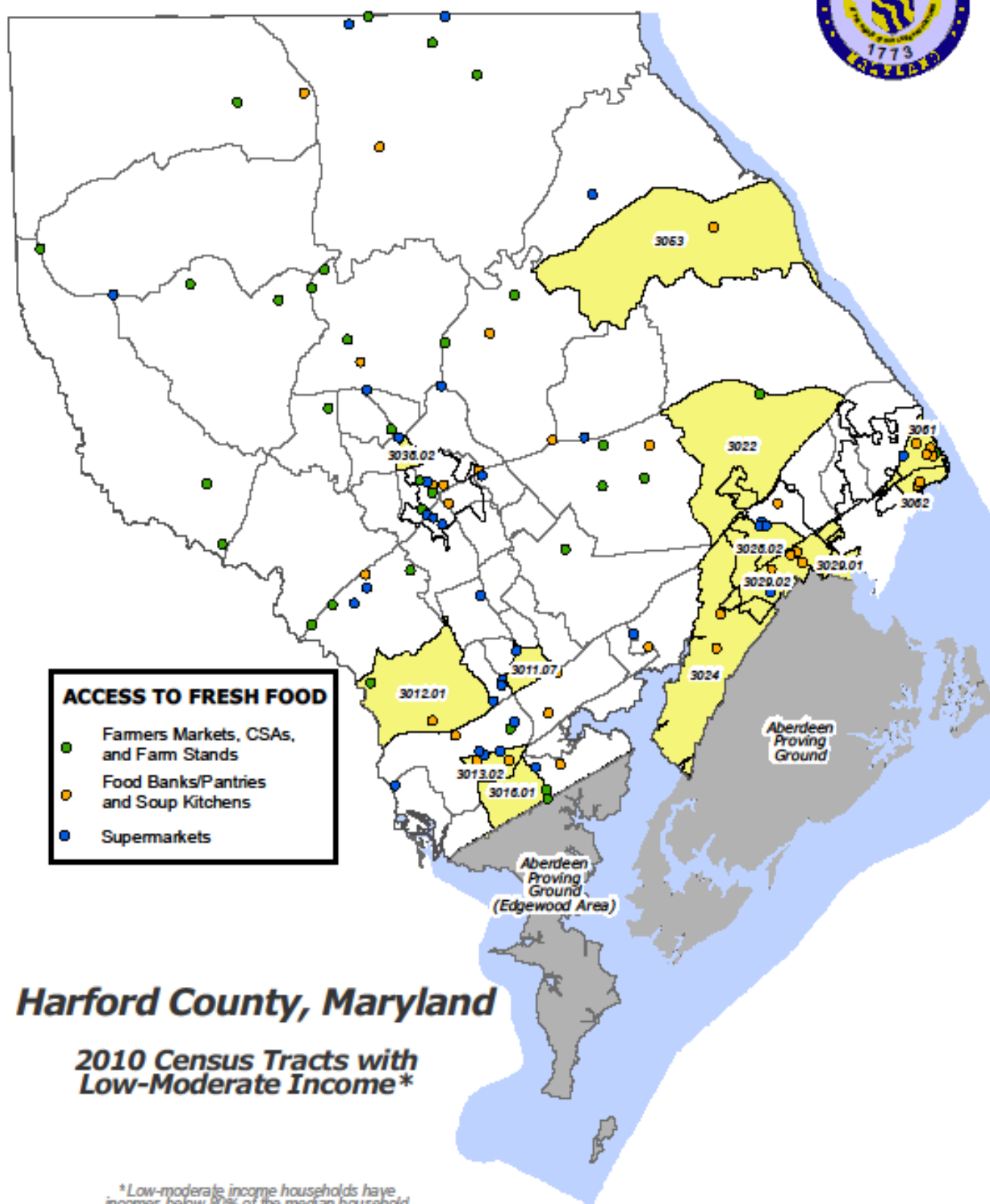


PENNSYLVANIA

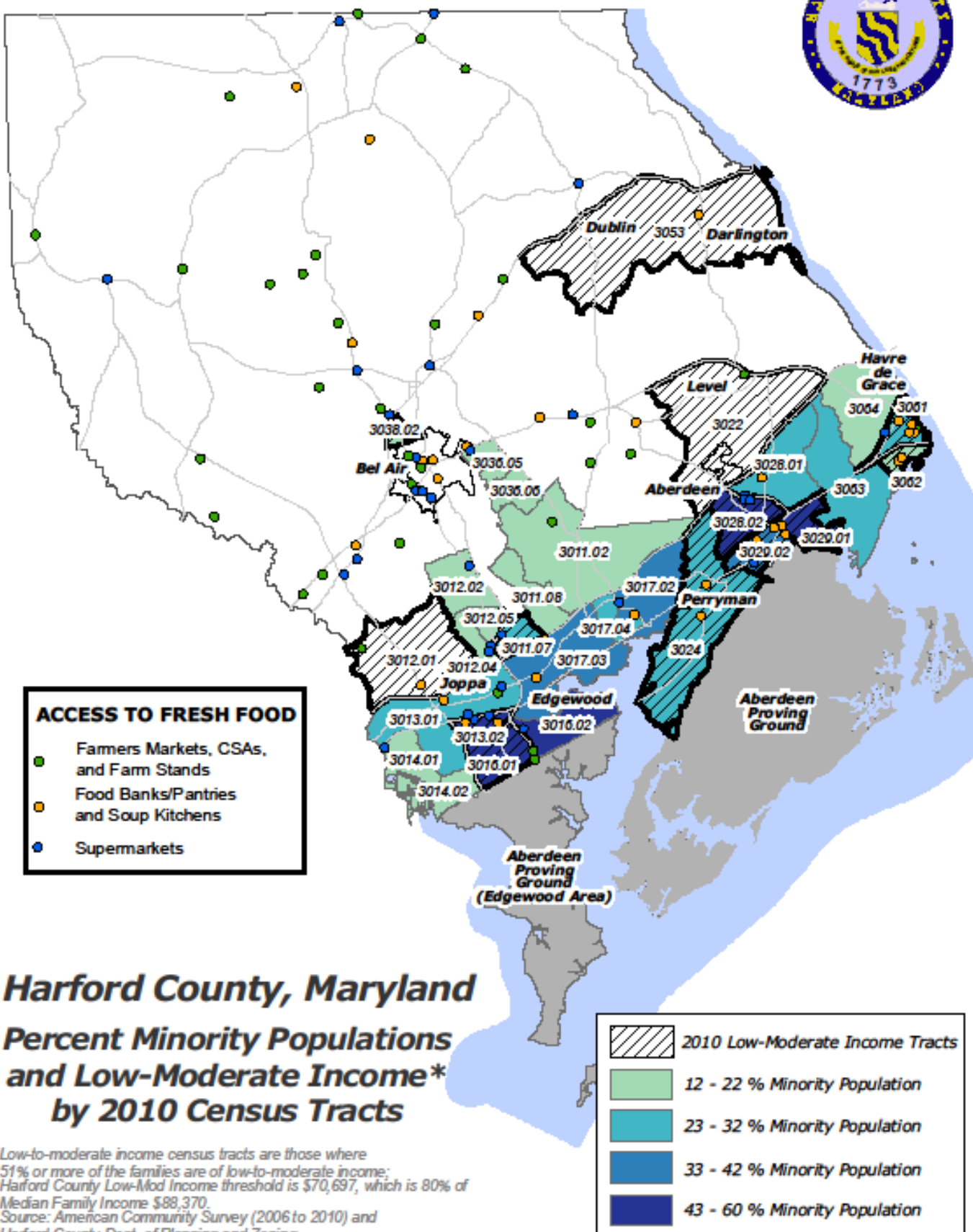
CECIL
COUNTY

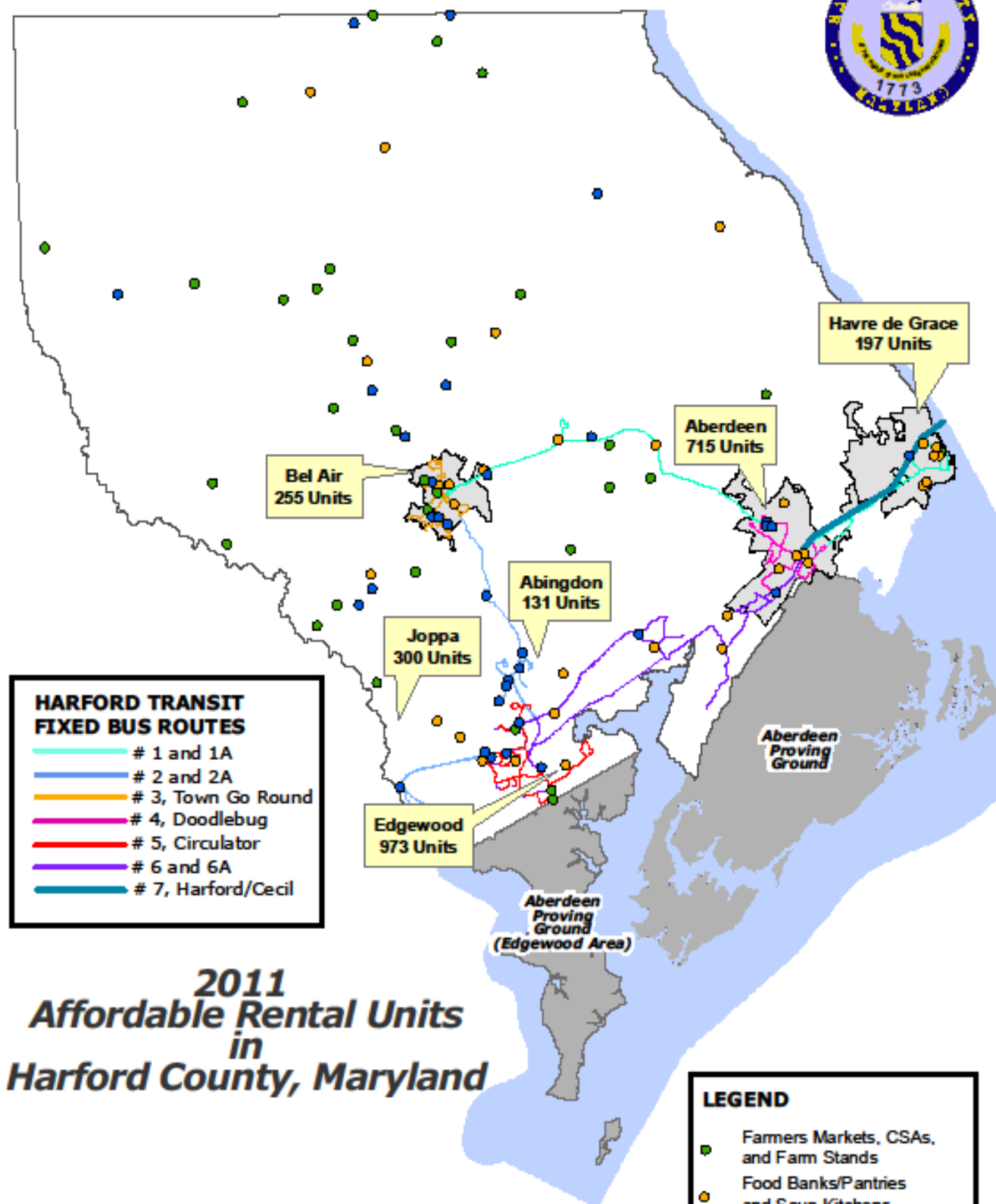


0 1 2
Miles



*Low-moderate income households have incomes below 80% of the median household income for Harford County.





2011 Affordable Rental Units in Harford County, Maryland

Low-to-moderate income census tracts are those where 51% or more of the families are of low-to-moderate income; Harford County Low-Mod Income threshold is \$70,697, which is 80% of Median Family Income \$88,370.
Source: American Community Survey (2006 to 2010) and Harford County Dept. of Planning and Zoning

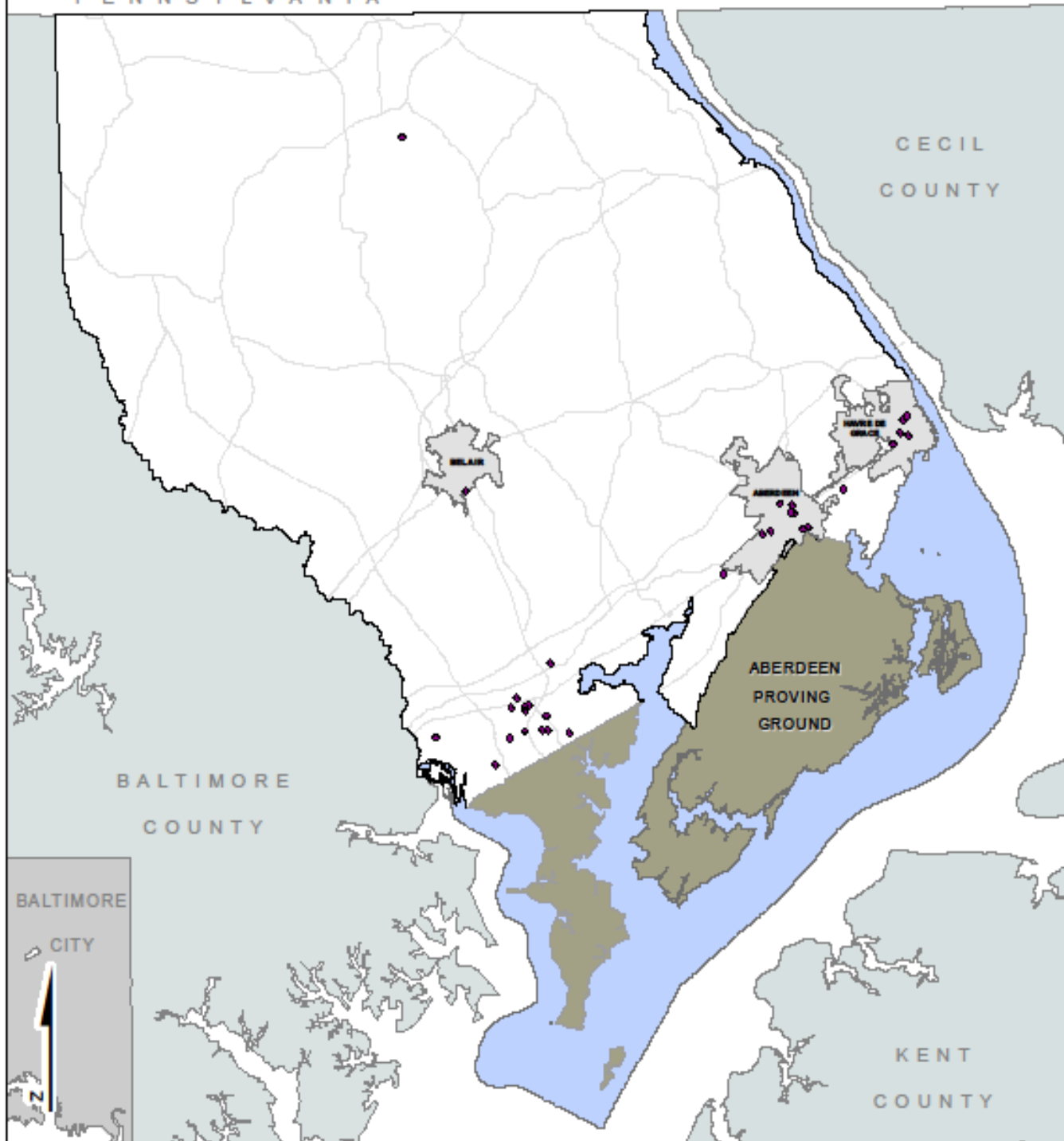
LEGEND

- Farmers Markets, CSAs, and Farm Stands
- Food Banks/Pantries and Soup Kitchens
- Supermarkets

ACCESS TO MEALS IN HARFORD COUNTY



P E N N S Y L V A N I A



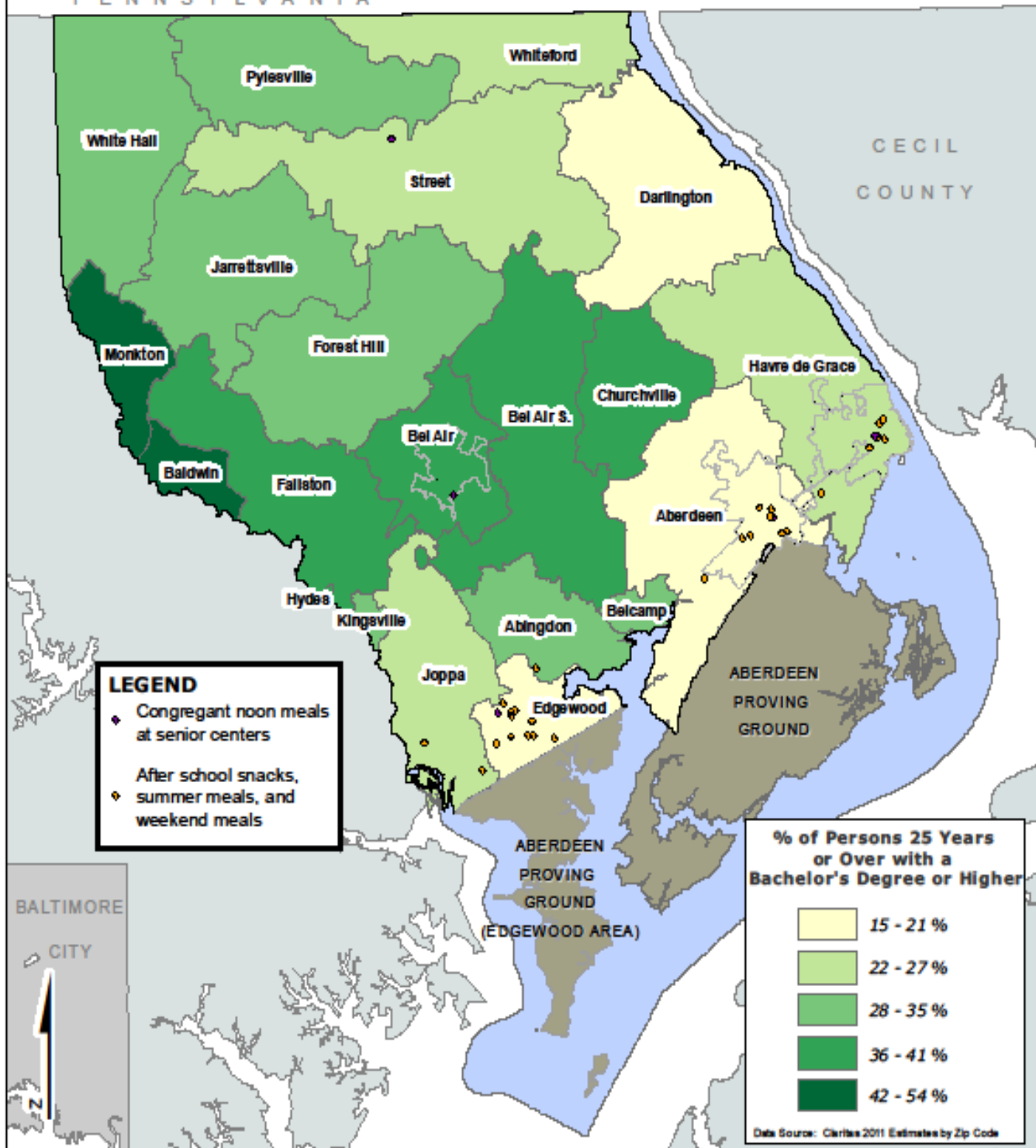
Includes after school snacks, summer meals, and weekend meals,
as well as congregant noon meals at the senior centers.

0 1 2
Miles

ACCESS TO MEALS IN HARFORD COUNTY



PENNSYLVANIA



0 1 2
Miles

ACCESS TO MEALS IN HARFORD COUNTY



PENNSYLVANIA

CECIL
COUNTY

BALTIMORE
COUNTY

BALTIMORE
CITY

ABERDEEN
PROVING
GROUND
(EDGEWOOD AREA)

ABERDEEN
PROVING
GROUND

LEGEND

- ◆ Congregant noon meals at senior centers
- ◆ After school snacks, summer meals, and weekend meals
- 2010 Census tracts with low - moderate income*

*Low-moderate income households have incomes below 80% of the median household income for Harford County.

0 1 2
Miles