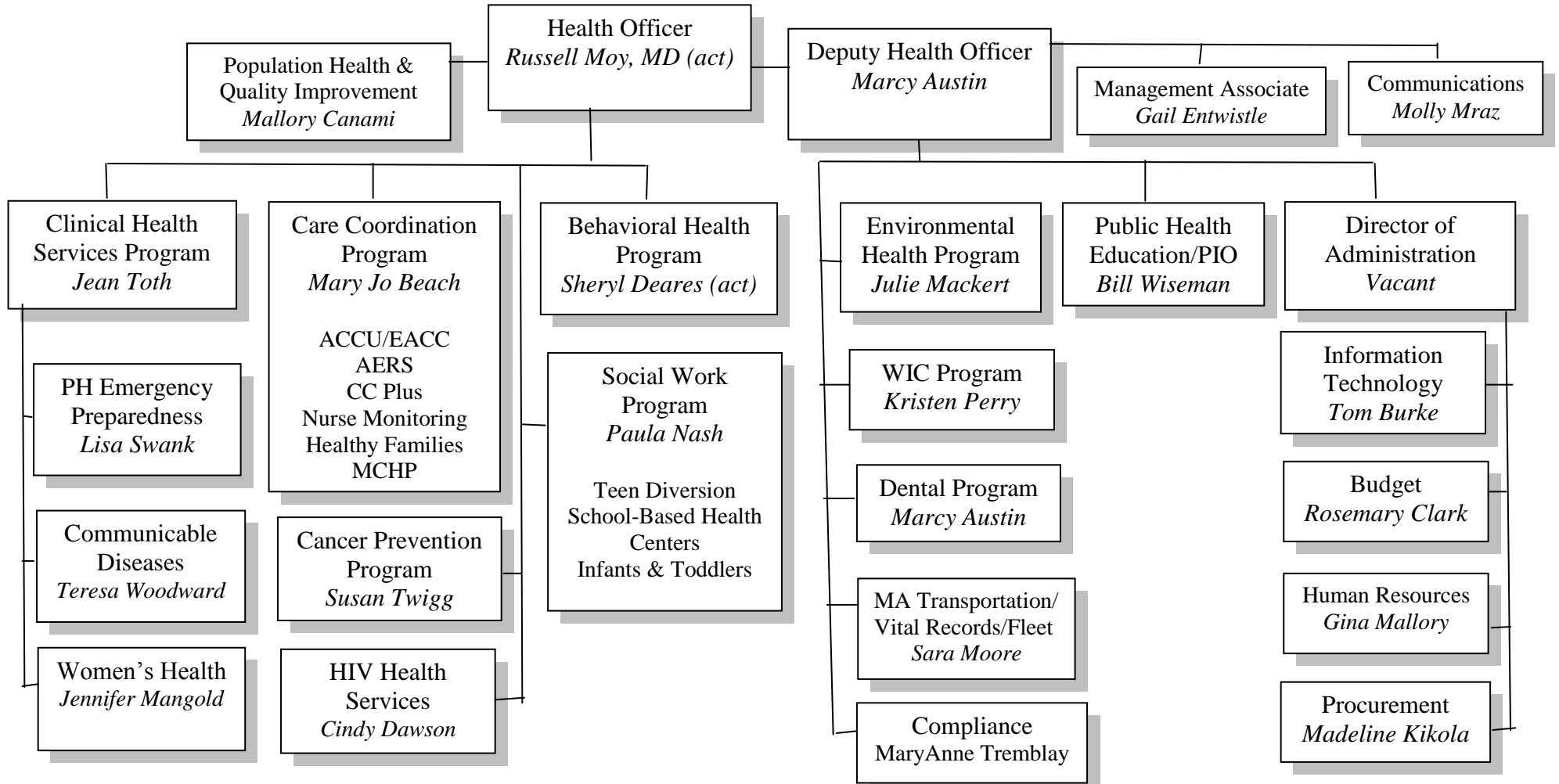


# HARFORD COUNTY HEALTH DEPARTMENT ORGANIZATIONAL CHART, JULY 2017



Population Health & Quality Improvement  
*Mallory Canami*

Health Officer  
*Russell Moy, MD (act)*

Deputy Health Officer  
*Marcy Austin*

Management Associate  
*Gail Entwistle*

Communications  
*Molly Mraz*

Clinical Health Services Program  
*Jean Toth*

Care Coordination Program  
*Mary Jo Beach*

Behavioral Health Program  
*Sheryl Deares (act)*

Environmental Health Program  
*Julie Mackert*

Public Health Education/PIO  
*Bill Wiseman*

Director of Administration  
*Vacant*

PH Emergency Preparedness  
*Lisa Swank*

ACCU/EACC  
AERS  
CC Plus  
Nurse Monitoring  
Healthy Families  
MCHP

Social Work Program  
*Paula Nash*

Teen Diversion  
School-Based Health Centers  
Infants & Toddlers

WIC Program  
*Kristen Perry*

Information Technology  
*Tom Burke*

Communicable Diseases  
*Teresa Woodward*

Cancer Prevention Program  
*Susan Twigg*

Dental Program  
*Marcy Austin*

Budget  
*Rosemary Clark*

Women's Health  
*Jennifer Mangold*

HIV Health Services  
*Cindy Dawson*

MA Transportation/Vital Records/Fleet  
*Sara Moore*

Human Resources  
*Gina Mallory*

Compliance  
*MaryAnne Tremblay*

Procurement  
*Madeline Kikola*